

# MONTERRA

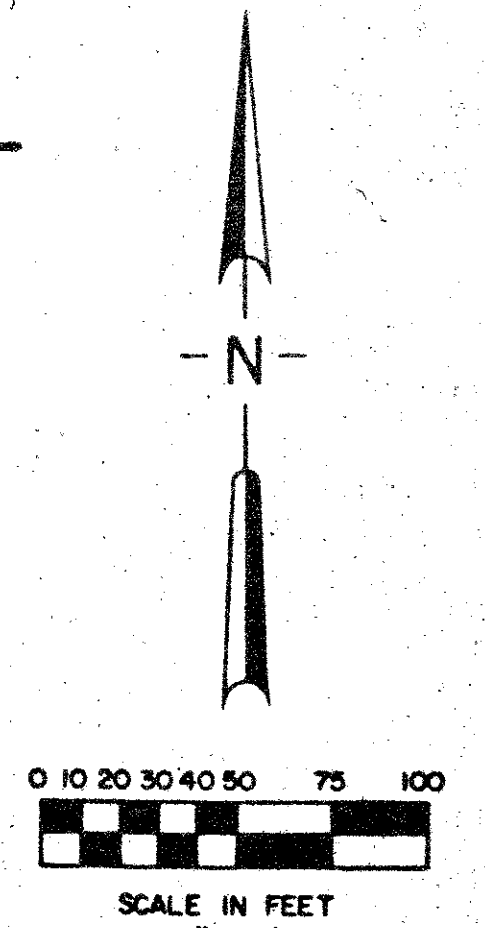
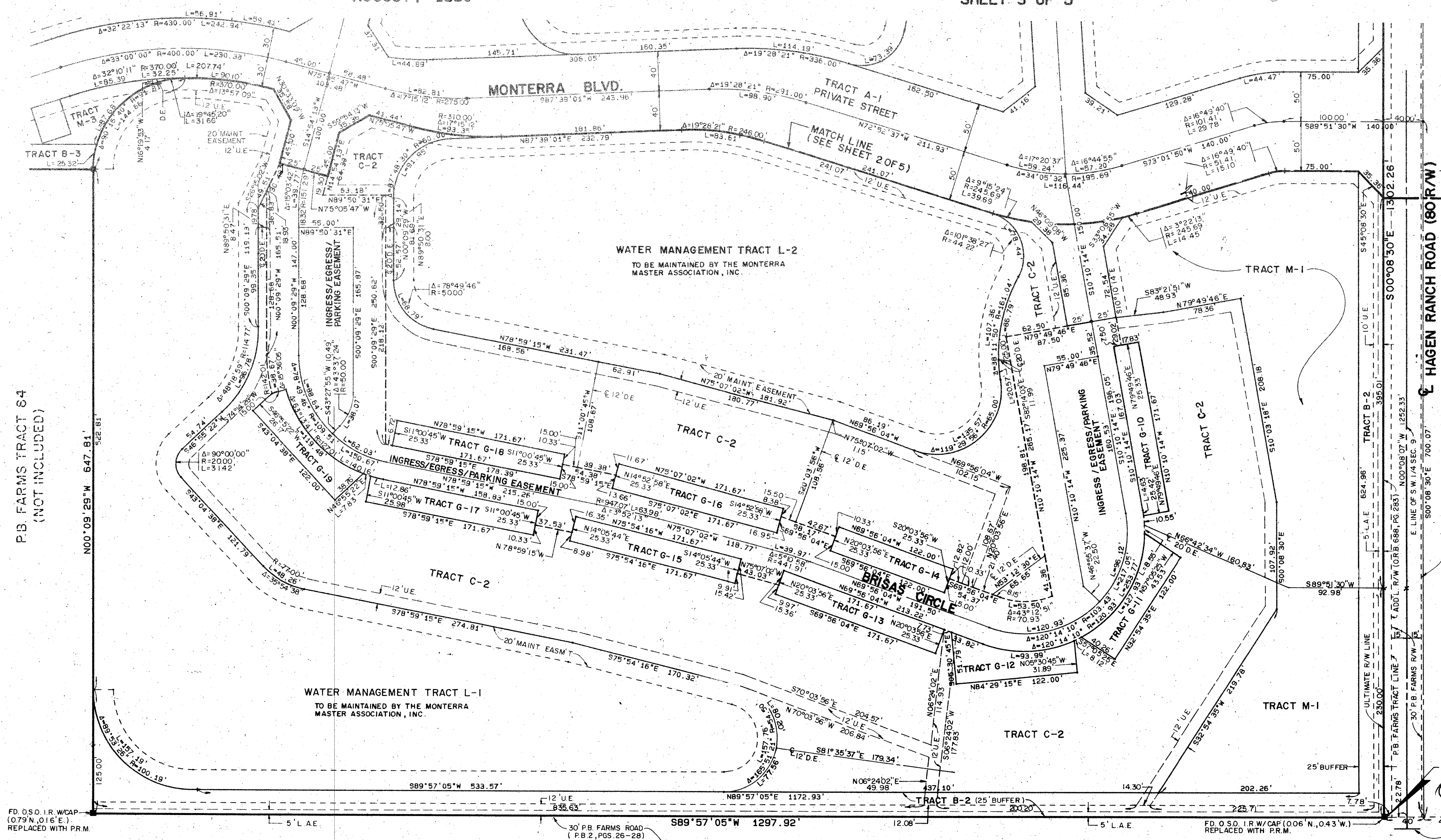
PART OF PINE RIDGE AT DELRAY BEACH NORTH P.U.D.

BEING A REPLAT OF HIDDEN LAKES PHASE NO. 1, (P.B. 41, PGS. 41-42) AND  
A PORTION OF BLOCK 9, PALM BEACH FARMS COMPANY PLAT NO. 1 (P.B. 2, PGS. 26-28)  
SITUATE IN SECTION 9, TOWNSHIP 46 SOUTH, RANGE 42 EAST  
PALM BEACH COUNTY, FLORIDA

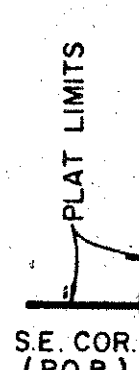
AUGUST, 1990

SHEET 3 OF 5

STATE OF FLORIDA  
COUNTY OF PALM BEACH  
THIS PLAT WAS FILED FOR  
RECORD  
THIS DAY OF  
AUGUST 1990 AND DULY RECORDED  
IN PLAT BOOK ON PAGES  
THROUGH  
JOHN B. DUNKLE, CLERK  
BY: \_\_\_\_\_, D.C.



UNPLATTED



P.O.B.  
SOUTH 1/4  
SECTION 9  
0253-001  
Plat 81-215  
MATCH LINE  
SEE DETAIL

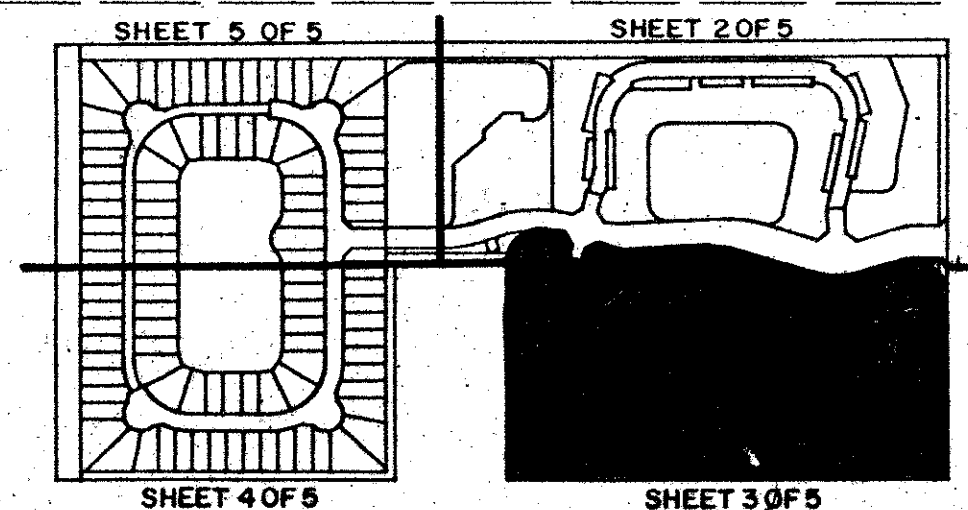
P.B. FARMS TRACT 84  
(NOT INCLUDED)

TAZ 459

FD. O.S.O. I.R. W/CAP  
(079'N, 016'E.)  
REPLACED WITH P.R.M.

FD. O.S.O. I.R. W/CAP  
(006'N, 043'W.)  
REPLACED WITH P.R.M.

PINE RIDGE AT DELRAY BEACH  
(P.B. 58, PGS. 47-51)



66/192

**PETSCHÉ & ASSOCIATES, INC.**  
Professional Engineers • Land Surveyors • Development Consultants  
1760 N. Congress Ave., Suite 203, W. Palm Beach, FL 33409  
(407) 640-3800

## MONTERRA

DRAWN M.E.H.	DATE OCT 1989	SCALE 1"=50'	JOB NO. 89-042	SHEET OF 3 5
DESIGNED	CHECKED R.A.H.			

SUBDIVISION \* MONTERRA  
BOOK 66  
PAGE 192  
FLOOD ZONE  
ZONING RS  
QUAD \* 51  
SB 81-215  
ZIP CODE 33446  
FULL NAME PINE RIDGE AT DELRAY BEACH